

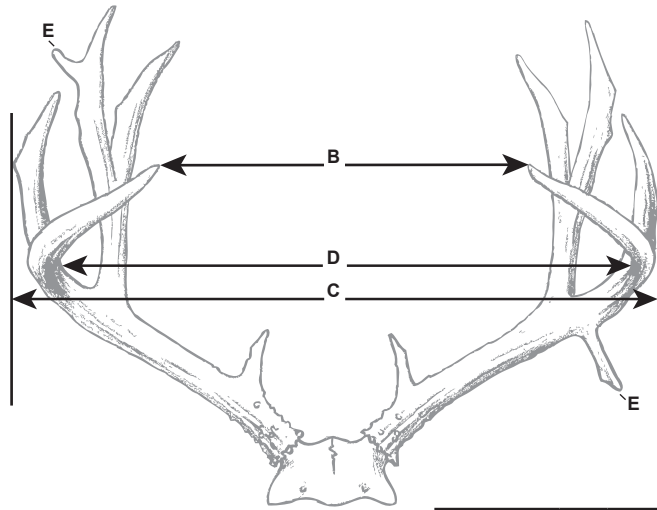
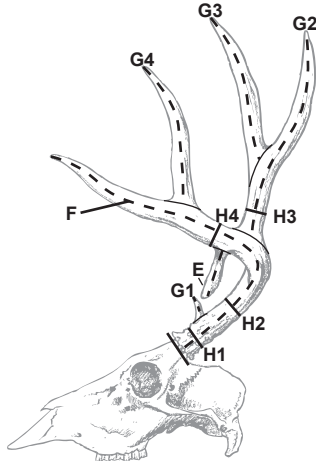


# BOONE AND CROCKETT CLUB®

OFFICIAL SCORING SYSTEM FOR NORTH AMERICAN BIG GAME TROPHIES

## TYPICAL MULE DEER AND BLACKTAIL DEER

<b>(CHECK ONE):</b>	<b>MINIMUM SCORES</b>	<b>AWARDS</b>	<b>ALL-TIME</b>
<input type="checkbox"/> mule deer	180		190
<input type="checkbox"/> Columbia blacktail	125		135
<input type="checkbox"/> Sitka blacktail	100		108



ABNORMAL POINTS	
Right Antler	Left Antler

**SEE OTHER SIDE FOR SCORING INSTRUCTIONS**

BELOW DATA (A, B, & C) DO NOT CALCULATE IN THE FINAL SCORE BUT ARE REQUIRED

A. No. Points on Right Antler		No. Points on Left Antler				
B. Tip to Tip Spread		C. Greatest Spread			SUBTOTALS	
				TOTAL TO E		
D. Inside Spread of Main Beams		SPREAD CREDIT (May Equal But Not Exceed Longer MAIN BEAM)		Column 1	Column 2	Column 3
				Right Antler	Left Antler	Difference
E. Total of Lengths of Abnormal Points						
F. Length of Main Beam						
G-1. Length of First Point, If Present						
G-2. Length of Second Point						
G-3. Length of Third Point, If Present						
G-4. Length of Fourth Point, If Present						
H-1. Circumference at Smallest Place Between Burr and First Point						
H-2. Circumference at Smallest Place Between First and Second Points						
H-3. Circumference at Smallest Place Between Main Beam and Third Point						
H-4. Circumference at Smallest Place Between Second and Fourth Points						
TOTALS						

<b>ADD TOGETHER:</b>	Spread Credit		Exact Locality Where Killed:*	County:	State/Prov:
	Column 1		Hunter (Legal Name):	Date Killed:	
	Column 2		Trophy Owner (Legal Name):	Telephone #:	
	Subtotal		Trophy Owner's Address:		
<b>SUBTRACT:</b>	Column 3		Trophy Owner's Email:	Guide's Name:	
<b>FINAL SCORE</b>			Remarks (Mention Any Abnormalities or Unique Qualities):		

\*Geographic location (lake, mountain, river, etc.) required for trophies taken in Canada and Alaska. Boone and Crockett Club® Official Measurer I.D. Number

Mail To: Boone and Crockett Club ■ 250 Station Drive, Missoula, MT 59801 ■ (406) 542-1888 ■ [www.booneandcrockettclub.com](http://www.booneandcrockettclub.com)

No part of this scoring system may be altered in any way. No part of this score chart may be altered or copied without express written permission from the Boone and Crockett Club. A score chart is not authenticated until signed and dated by a certified Boone and Crockett Club Official Measurer. No scores are official Boone and Crockett scores until verified and the trophy is accepted by the Boone and Crockett Club. All trophy entries into the Boone and Crockett Club's Awards Programs are subject to verification.

I, \_\_\_\_\_, certify that I have measured this trophy on \_\_\_\_\_  
PRINT NAME MM/DD/YYYY

at \_\_\_\_\_  
STREET ADDRESS CITY STATE/PROVINCE

and that these measurements and data are, to the best of my knowledge and belief, made in accordance with the instructions given.

Witness: \_\_\_\_\_ Signature: \_\_\_\_\_ B&C I.D. Number 

--	--	--	--

B&C OFFICIAL MEASURER

### BOONE AND CROCKETT CLUB® INSTRUCTIONS FOR MEASURING TYPICAL MULE AND BLACKTAIL DEER

All measurements must be made with a 1/4-inch wide flexible steel tape to the nearest one-eighth of an inch. (Note: A flexible steel cable can be used to measure points and main beams only.) Enter fractional figures in eighths, without reduction. Official measurements cannot be taken until the antlers have air dried at a habitable room temperature for at least 60 days after the animal was killed. The 60-day drying period for a trophy that has been frozen or boiled begins the day it is removed from the freezer, boiling pot, or submersion in any liquid.

- A. Number of Points on Each Antler:** To be counted a point, the projection must be at least one inch long, with length exceeding width at one inch or more of length. All points are measured from tip of point to nearest edge of beam. Beam tip is counted as a point but not measured as a point. **Point totals do not add into the final score.**
- B. Tip to Tip Spread** is measured between tips of main beams. **Tip to tip spread does not add into the final score.**
- C. Greatest Spread** is measured between perpendiculars at a right angle to the center line of the skull at widest part, whether across main beams or points. **Greatest spread does not add into the final score.**
- D. Inside Spread of Main Beams** is measured at a right angle to the center line of the skull at widest point between main beams. Enter this measurement again as the Spread Credit if it is less than or equal to the length of the longer main beam; if greater, enter longer main beam length for Spread Credit.
- E. Total of Lengths of all Abnormal Points:** Abnormal Points are those non-typical in location such as points originating from a point (exception: G-3 originates from G-2 in perfectly normal fashion) or from bottom or sides of main beam, or any points beyond the normal pattern of five (including beam tip) per antler. Measure each abnormal point in usual manner and enter in appropriate blanks.
- F. Length of Main Beam** is measured from the center of the lowest outside edge of burr over the outer side to the most distant point of the Main Beam. The point of beginning is that point on the burr where the center line along the outer side of the beam intersects the burr, then following generally the line of the illustration.
- G-1-2-3-4. Length of Normal Points:** Normal points are the brow tines and the upper and lower forks as shown in the illustration. They are measured from nearest edge of main beam over outer curve to tip. Lay the tape along the outer curve of the beam so that the top edge of the tape coincides with the top edge of the beam on both sides of point to determine the baseline for point measurement. Record point lengths in appropriate blanks.
- H-1-2-3-4. Circumferences** are taken as detailed in illustration for each measurement. If brow point is missing, take H-1 and H-2 at smallest place between burr and G-2. If G-3 is missing, take H-3 halfway between the base and tip of G-2. If G-4 is missing, take H-4 halfway between G-2 and tip of main beam.

### BOONE AND CROCKETT CLUB® MATERIALS RELEASE FORM FOR ALL NON-HUNTER-TAKEN TROPHIES

I certify by my signature that the information I have provided on this form is accurate and correct. I also understand that all my entry materials, including photographs, as well as any additional photographs taken by Boone and Crockett (our representatives or agents) during Awards Programs or Judges Panels, or likenesses rendered from these photographs become the property of the Boone and Crockett Club and may be used to promote the Club, and its records-keeping activities.

Date: \_\_\_\_\_ Signature of Trophy Owner: \_\_\_\_\_

### BOONE AND CROCKETT CLUB® ENTRY AFFIDAVIT FOR ALL HUNTER-TAKEN TROPHIES

For the purpose of entry into the Boone and Crockett Club's® records, North American big game harvested by the use of the following methods or under the following conditions are ineligible:

- I. Spotting or herding game from the air, followed by landing in its vicinity for the purpose of pursuit and shooting;
- II. Herding or chasing with the aid of any motorized equipment;
- III. Use of electronic communication devices to guide hunters to game, artificial lighting, electronic light intensifying devices (night vision optics), sights with built-in electronic range-finding capabilities, thermal imaging equipment, electronic game calls or cameras/timers/ motion tracking devices that transmit images and other information to the hunter;
- IV. Confined by artificial barriers, including escape-proof fenced enclosures;
- V. Transplanted for the purpose of commercial shooting;
- VI. By the use of traps or pharmaceuticals;
- VII. While swimming, helpless in deep snow, or helpless in any other natural or artificial medium;
- VIII. On another hunter's license;
- IX. Not in full compliance with the game laws or regulations of the federal government or of any state, province, territory, or tribal council on reservations or tribal lands;

I certify that the trophy scored on this chart was not taken in violation of the conditions listed above. In signing this statement, I understand that if the information provided on this entry is found to be misrepresented or fraudulent in any respect, it will not be accepted into the Awards Program and 1) all of my prior entries are subject to deletion from future editions of **Records of North American Big Game** 2) future entries may not be accepted. I also certify by my signature that the information I have provided on this form is accurate and correct. I also understand that all my entry materials, including photographs, as well as any additional photographs taken by Boone and Crockett (our representatives or agents) during Awards Programs or Judges Panels, or likenesses rendered from these photographs become the property of the Boone and Crockett Club and may be used to promote the Club, and its records-keeping activities. I also agree to make my trophy available for DNA analysis if deemed necessary by the Club to determine the proper entry category.

FAIR CHASE, as defined by the Boone and Crockett Club®, is the ethical, sportsmanlike and lawful pursuit and taking of any free-ranging wild, native North American big game animal in a manner that does not give the hunter an improper advantage over such game animals.

The Boone and Crockett Club® may exclude the entry of any animal that it deems to have been taken in an unethical manner or under conditions deemed inappropriate by the Club.

Date: \_\_\_\_\_ Signature of Hunter: \_\_\_\_\_  
(SIGNATURE MUST BE WITNESSED BY AN OFFICIAL MEASURER OR A NOTARY PUBLIC.)

Date: \_\_\_\_\_ Signature of Notary or Official Measurer: \_\_\_\_\_