

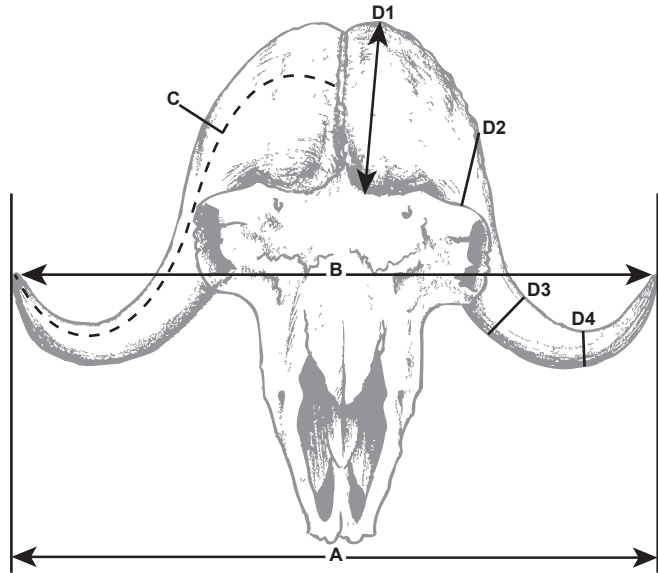
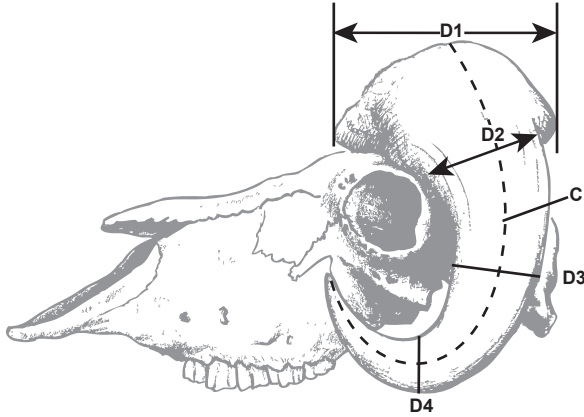


# BOONE AND CROCKETT CLUB®

OFFICIAL SCORING SYSTEM FOR NORTH AMERICAN BIG GAME TROPHIES

## MUSK OX

**MINIMUM SCORES**  
AWARDS ALL-TIME  
105      105



A & B DO NOT CALCULATE IN THE FINAL SCORE BUT ARE REQUIRED		SEE OTHER SIDE FOR SCORING INSTRUCTIONS		Column 1	Column 2	Column 3
A. Greatest Spread				Right Horn	Left Horn	Difference
B. Tip to Tip Spread						
C. Length of Horn						
D-1. Width of Boss						
D-2. Width at First Quarter		Location of First Quarter Width: _____				
D-3. Circumference at Second Quarter		Location of Second Quarter Circumference: _____				
D-4. Circumference at Third Quarter		Location of Third Quarter Circumference: _____				
<b>TOTALS</b>						
<b>ADD TOGETHER:</b>		Column 1	Column 2	Exact Locality Where Killed:* _____ County: _____ State/Prov: _____		Hunter (Legal Name): _____ Date Killed: _____
<b>SUBTRACT:</b>		Subtotal	Column 3	Trophy Owner (Legal Name): _____ Telephone #: _____		Trophy Owner's Address: _____
<b>FINAL SCORE</b>				Trophy Owner's Email: _____ Guide's Name: _____		Remarks (Mention Any Abnormalities or Unique Qualities): _____
*Geographic location (lake, mountain, river, etc.) required for trophies taken in Canada and Alaska.						

I, \_\_\_\_\_, certify that I have measured this trophy on \_\_\_\_\_

PRINT NAME MM/DD/YYYY

at \_\_\_\_\_

STREET ADDRESS CITY STATE/PROVINCE

and that these measurements and data are, to the best of my knowledge and belief, made in accordance with the instructions given.

Witness: \_\_\_\_\_ Signature: \_\_\_\_\_

B&C OFFICIAL MEASURER

Boone and Crockett Club® Official Measurer I.D. Number

Mail To: Boone and Crockett Club ■ 250 Station Drive, Missoula, MT 59801 ■ (406) 542-1888 ■ [www.booneandcrockettclub.com](http://www.booneandcrockettclub.com)

No part of this scoring system may be altered in any way. No part of this score chart may be altered or copied without express written permission from the Boone and Crockett Club. A score chart is not authenticated until signed and dated by a certified Boone and Crockett Club Official Measurer. No scores are official Boone and Crockett scores until verified and the trophy is accepted by the Boone and Crockett Club. All trophy entries into the Boone and Crockett Club's Awards Programs are subject to verification.

## BOONE AND CROCKETT CLUB® INSTRUCTIONS FOR MEASURING MUSK OX

All measurements must be made with a 1/4-inch wide flexible steel tape and adjustable calipers to the nearest one-eighth of an inch. Enter fractional figures in eighths, without reduction. Official measurements cannot be taken until the horns have air dried at a habitable room temperature for at least 60 days after the animal was killed. The 60-day drying period for a trophy that has been frozen or boiled begins the day it is removed from the freezer or boiling pot, or submersion in any liquid.

- A. Greatest Spread** is measured between perpendiculars at a right angle to the center line of the skull. **Greatest spread does not add into the final score.**
- B. Tip to Tip Spread** is measured between tips of horns. **Tip to tip spread does not add into the final score.**
- C. Length of Horn** is measured along center of upper horn surface, staying within curve of horn as illustrated, to a point in line with tip. Attempt to free the connective tissue between the horns at the center of the boss to determine the lowest point of horn material on each side. Hook the tape under the lowest point of the horn and measure the length of horn, with the measurement line maintained in the center of the upper surface of horn following the converging lines to the horn tip. A flexible steel cable may be substituted for the 1/4-inch steel tape for this measurement only.
- D-1. Width of Boss** is measured with calipers at greatest width of the boss, with measurement line forming a right angle with horn axis. It is often helpful to measure D-1 before C, marking the midpoint of the boss as the correct path of C.
- D-2-3-4. Divide measurement C** of longer horn by four. Starting at base, mark both horns at these quarters (even though the other horn is shorter). Then, using calipers, measure width of boss at D-2, making sure the measurement is at a right angle to horn axis and in line with the D-2 mark. Circumferences are then measured at D-3 and D-4, with measurements being taken at right angles to horn axis.

### BOONE AND CROCKETT CLUB® MATERIALS RELEASE FORM FOR ALL NON-HUNTER-TAKEN TROPHIES

I certify by my signature that the information I have provided on this form is accurate and correct. I also understand that all my entry materials, including photographs, as well as any additional photographs taken by Boone and Crockett (our representatives or agents) during Awards Programs or Judges Panels, or likenesses rendered from these photographs become the property of the Boone and Crockett Club and may be used to promote the Club, and its records-keeping activities.

Date: \_\_\_\_\_ Signature of Trophy Owner: \_\_\_\_\_

## ENTRY REQUIREMENTS FOR BOONE AND CROCKETT TROPHIES

- Current original score chart, signed and dated by the Official Measurer.**
- \$40 Entry Fee.** The entry fee, which is nonrefundable, is payable in cash, personal check, money order, credit card, etc.,. It is waived for government fish and wildlife agencies, Official Measurers, museums, educational institutions, etc.
- Clearly focused photographs** of trophy front, right side, and left side of horns or antlers. For skull, include photographs of front, top, right side, and left side. Digital photographs are acceptable, but must be high quality. 3"x4" or 4"x6" photos are preferred, either singly or all on a single 8.5"x11" sheet of glossy photo-grade paper.
- Entry Affidavit or Materials Release Form.** The hunter's signature on the Entry Affidavit must be witnessed by either an Official Measurer, notary public, or Commissioner of Oaths (Canada), or it is not acceptable. No Entry Affidavit is required for trophies of unknown origin, picked up, hunter deceased, purchased at flea markets, etc. However, a Materials Release Form, signed by the owner, is required for these trophies. The Materials Release Form is on the back of the score chart.
- Hunter, Guide, and Hunt Information form or Narrative of the history of the trophy.** A completed Hunter, Guide, and Hunt Information form is required even if the services of a guide were not employed on the hunt. The hunter simply needs to complete the parts of the HGH form that apply to his particular trophy.
- Copy of hunting license/big-game tag/salvage permit used to take or possess the trophy.** In lieu of a copy of the original license/tag, B&C will accept a statement from an appropriate Game and Fish Department official certifying that a license (and any required tags) was possessed by the hunter at the time the trophy was taken. If the Game and Fish Department no longer has records at its disposal to verify a license purchase, a written statement, on official letterhead, from game and fish personnel stating the fact that the license information is no longer available is acceptable. If a salvage or possession permit is required in the particular state for picked up trophies, submit a copy of that document or a letter stating it was issued if it is no longer available.
- A narrative is required for trophies of unknown origin, picked up, hunter deceased, purchased at flea markets, etc. The narrative must include pertinent information about how the trophy was acquired, condition of trophy (if found), dates, bills of sale, etc. If a boundary is involved with the category (e.g. Columbia blacktail deer), the exact location where it came from must be included.

Copies of the Entry Affidavit and Hunter, Guide, and Hunt Information form, as well as downloadable score charts, lists of Official Measurers, etc., can be obtained by calling B&C headquarters (406/542-1888) or on-line at [www.booneandcrockettclub.com](http://www.booneandcrockettclub.com)

Please mail original score chart and entry materials to Boone and Crockett Club, 250 Station Dr., Missoula, MT 59801